



# Long Center for the Performing Arts

## AT&T Education Rooms

### Entry/Rollins Lobby Level

#### Room Dimensions

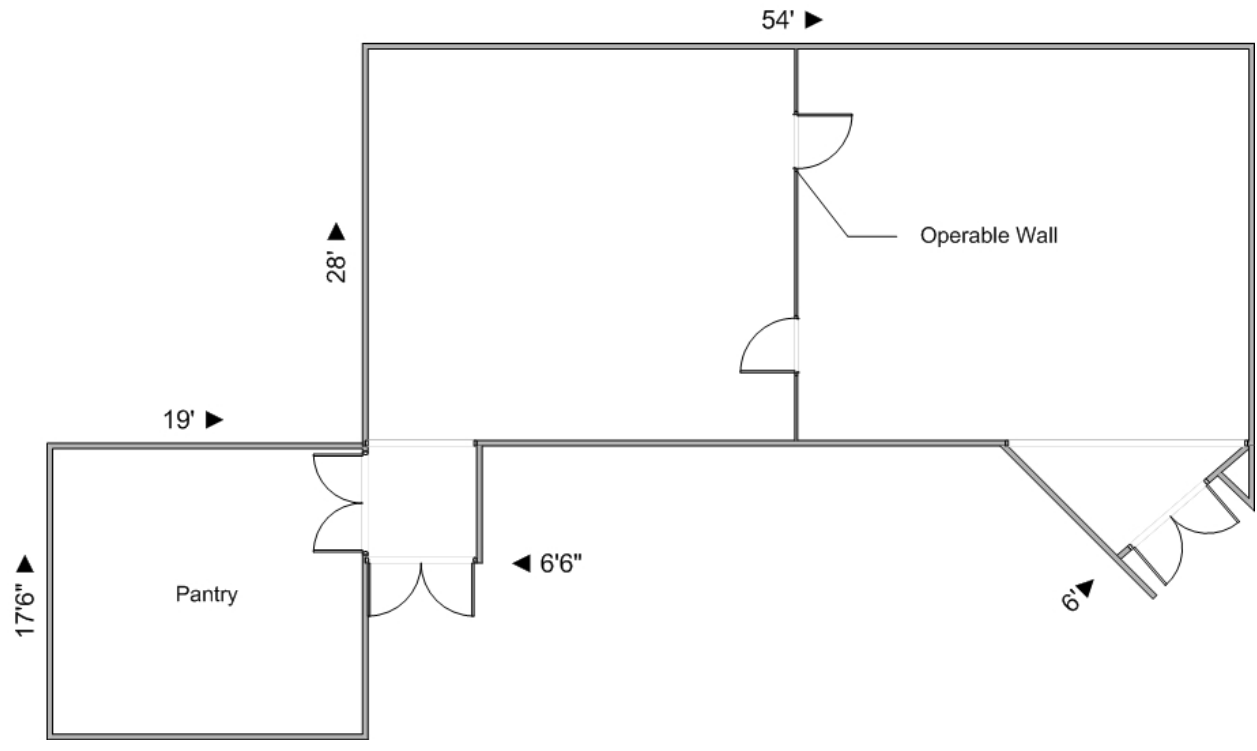
54' x 28' (or two rooms of 27' x 28' each)  
Entry Level

#### Overview

The AT&T Education rooms are accessible from the Entry Level of the building. This space can be used as one room or two, by using the operable wall. The room is data ready with multiple ports throughout the room.

The pantry (19' x 17'6") also comes with the rental of the space. Pantry has a sink, dishwasher, and mini-fridge.

#### Room Dimensions



#### Room Capacities

	Reception	Theatre Style	Classroom	U-Shape	Hollow Square	Board Room
AT&T Education Rm. I & II	125 people	100 people	80 people	40 people	50 people	40 people
AT&T Education Rm. I	60 people	50 people	30 people	20 people	25 people	20 people
AT&T Education Rm. II	60 people	50 people	30 people	20 people	25 people	20 people